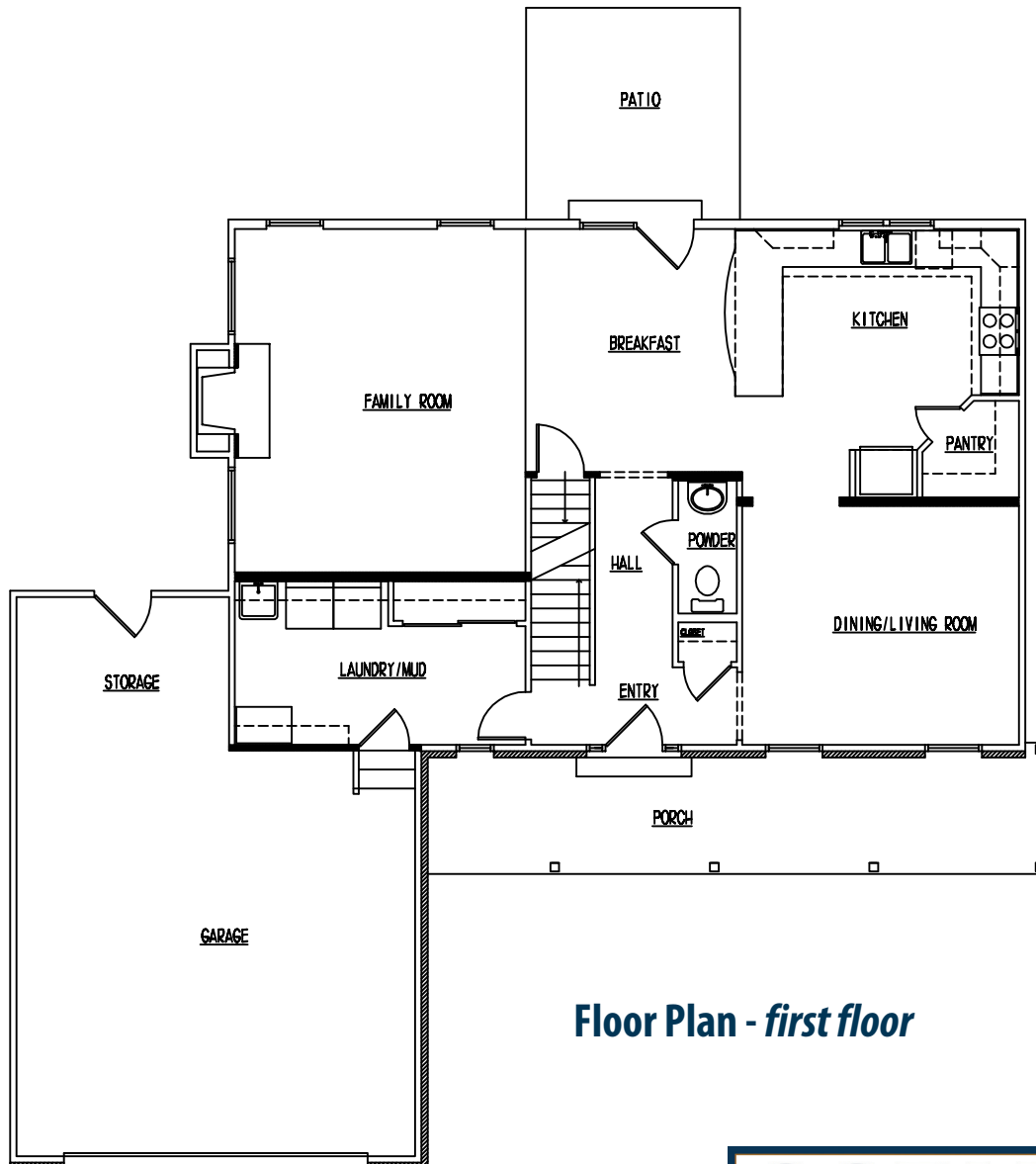


Caldwell

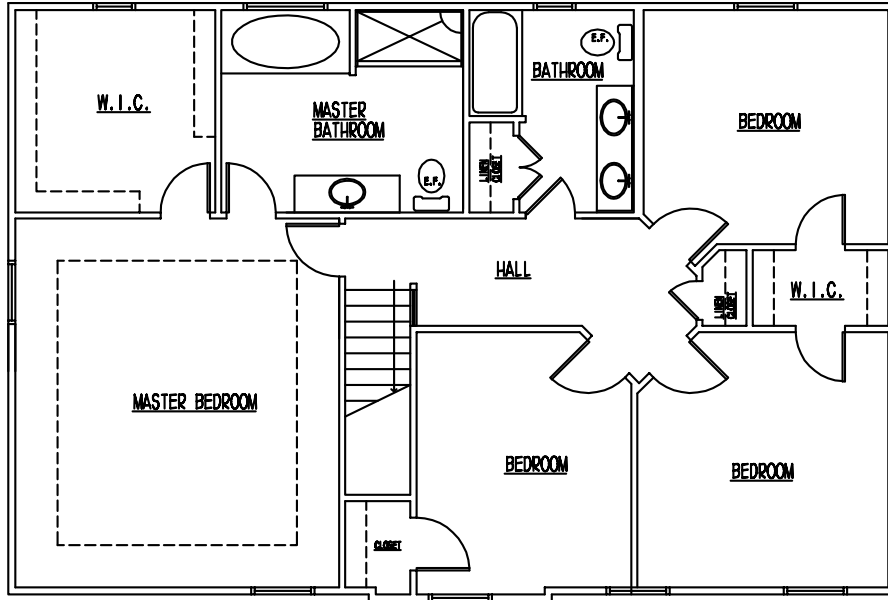
Designed for families, the **Caldwell** has enough room for everyone. Four bedrooms, two and a half bathrooms, and a large kitchen with walk in pantry are just some of the highlights. A full front porch invites you in, and a fireplace and spacious laundry add to your comfort. The two car garage even offers extra storage area for your family's needs.



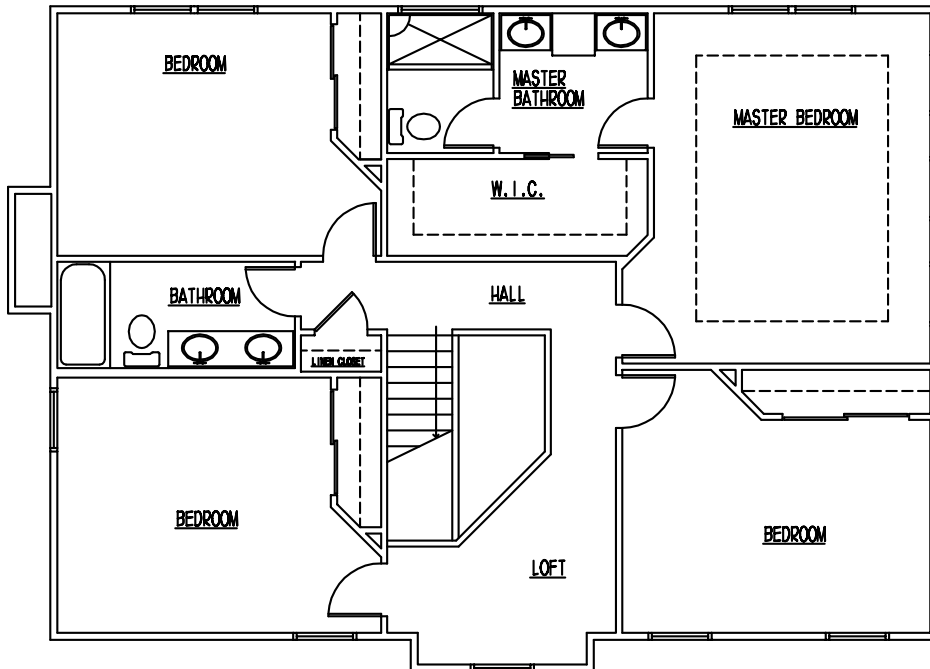
Front Elevation



Floor Plan - first floor



Option A Floor Plan - second floor



Option B Floor Plan - second floor